
GOVERNANCE
REPORT
2020

Park Güell

BARCELONA



Ajuntament de
Barcelona





Contents

01

Introduction

02

2020,
a new change
of cycle

03

Governance
2020

04

Initiatives
2020

05

Economic
data





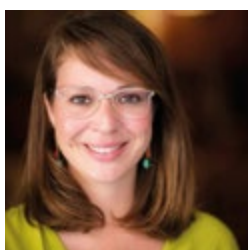
01

Introduction

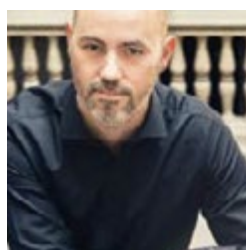




The effects of the pandemic on the Park were the same as for everyone else, immediate, unexpected, staggering and in many cases also surprising. Everyone involved in the day-to-day running of the Park was aware that once we opened the doors again, nothing would be the same. We also saw that we not only had an opportunity before us but also the obligation to seriously reflect on our current situation, our work and, most importantly, the immediate future of the Park. We needed to take a close look at the ultimate mission of the Strategic Plan of the Park, which was the return of the citizens, to better preserve and conserve the heritage and reduce some of the impacts which until now had been caused by the tourism to the neighbouring districts, with these forming the main cornerstones of our reflection. We present the report for 2020, which will never be forgotten, and we can now detail that the results of our reflection, as well as the actions and measures that we have applied, at the close of this report have been positive, as verified by the agents participating in the governance of the Park. With the long-awaited return to normality, these are actions which will certainly mark a more sustainable and intimate future for Park Güell.



Janet Sanz Cid
Second Deputy Mayor



Eloi Badia Casas
Councillor's Office for Climate
Emergency and Ecological Transition



02

2020,
a new change
of cycle



02

2020, a new
change of
cycle

Park Güell: before and after the pandemic

The Park's history:

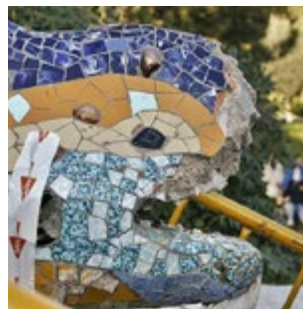
Early 20th century

Since the beginning of the 20th century, Park Güell has become a place for gatherings and leisure and has even become a key public attraction for the cultural Barcelona.



1969/1984

The park's declaration as a historic and artistic monument in 1969 and its recognition by UNESCO as a World Heritage site in 1984 resulted in ever increasing numbers of visitors and the need to implement new preservation measures of the architectural and natural value of our Park.



2013

2013 was the beginning of a new change of cycle with measures such as the implementation of access regulation measures and the possibility to purchase tickets in advance to reduce tourist pressure, both in the Park and its surrounding areas.



2018/2019

A new management model was created in 2018 to design a new future scenario with the objective being the social return of the Park to the city. In 2019, nearly 27% of the 199 proposals for improvement contained in the Strategic Plan in areas such as social, green, cultural, mobility, overcrowding, etc, had been met.



02.1

Chronology
of the new
scenario

2020 began with Park Güell closing its doors for three days as a preventive measure due to the effects of Storm Gloria. Never before in the history of the Park had it been closed for such a long time, but there was some severe damage: a dozen fallen trees (two of which were over a hundred years old and they fell on the Laundry Room Portico), there was damage to the paving stones, and numerous fallen branches. The Parks and Gardens and Architectural Heritage teams worked for weeks to remove the fallen trees.



14 MARCH

On **14 March**, once the state of alarm had been declared by the emergency services, Park Güell closed its doors.





Extension of the measures throughout Park Güell. The number of visitors was reduced to 50% of the maximum capacity to comply with social distancing.

20 MAY

The commencement of the lifting of the lockdown led to a change in timetables and access for residents in the neighbouring areas. The park is open to everyone with the exception of those areas affected by works, children's play areas, picnic areas, access roads and zones below the viaducts, as well as the access to the monumental staircase. The new doors granting access to the 12 monumental hectares of the Park remained open from 8 a.m. until 10 p.m.



22 JUNE

On **22 June**, a series of measures were implemented immediately after being agreed with all the municipal operators involved in the running of the Park and with the residents associations of both Gràcia and Horta-Guinardó, who all assisted in the development of the specific governance model that we presently have. The measures can be divided into two large groups: encouraging the immediate social use of the Park by the local residents and to apply preventive measures so that on a future date, whenever that might be, visits could be progressively increased. These measures have always taken into account the individual or collective safety in the fight against Covid-19 to ensure that the Park remains a safe place.



GLOBAL SAFE SITE: Ensures that all the preventive safety measures are fulfilled to prevent this possible spread of Covid-19.



SAFE TRAVELS: International recognition of the standardised protocols for prevention and safety measures against Covid-19 established by the WHO. This seal by the World Travel & Tourism Council (WTTC) as awarded by Turisme de Barcelona.



BIOSPHERE: Approves the best practices in responsible and sustainable tourism of the activity and guarantees economic, sociocultural and environmental balance in order to care for the environment.

02.1

Chronology
of the new
scenario

29 JUNE

Commencement of access control:

- 4 access gates exclusively for residents and Gaudí+ holders
- 4 shared access gates with distinguishing signposting (Carmel, Olot, Sant Josep de la Muntanya and baixada de la Glòria).
- 1 exit gate (carrer d'Olot) following the directions of the new Self-protection Plan.



6 JULY

Commencement of the 'new reality' and the application of new measures. Adaptation of time slots without tourism.



Total visitors 2019-2020



January

199,605
180,392

February

206,543
195,482

March

249,664
69,962

April

282,245
NOT AVAILABLE

May

318,197
NOT AVAILABLE

June

310,918
NOT AVAILABLE

July

322,549
43,572

August

316,985
37,270

September

286,570
22,175

October

282,928
23,540

November

204,250
9,190

December

173,519
11,725

Total

3,153,973
593,206

Map of zones:

The number of visitors for 2020 is much lower than in recent times, when Park Güell was the second most visited monument in the city of Barcelona and received around 3.5 million visitors a year (regulated zone). The health crisis, the forced closure of the Park and the decreased national and international tourism has resulted in a decrease of 82% of visitors compared to 2019.

NO VISITORS REGULATED ZONES
ONLY



NO VISITORS WITHIN THE
WHOLE PERIMETER: 12ha





02.2

New paradigm.



4-



5-

The new formal framework of measures for the new management of the Park have resulted in immediately encouraging the social use of the Park by the local residents and to apply preventive measures so that at a future date, that uncertain time, visits could be progressively increased.

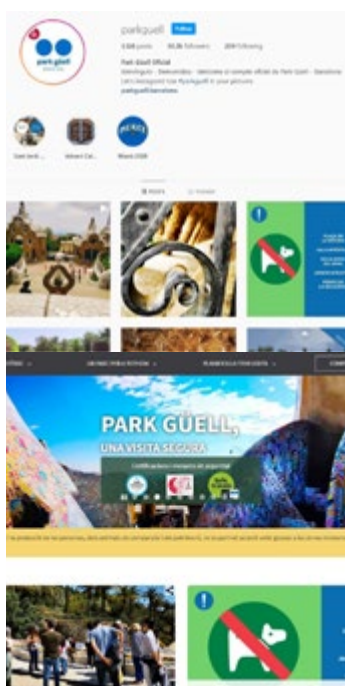
1. **Expand the regulated zone** to coincide with the actual opening hours of the Park and its access points, to increase this from 1.7 to 12 regulated hectares. This action aims to facilitate the control of the access points, the flow of visitors, and to drastically decrease the Park's load capacity.
2. Create a **new distribution of the access gates** and reserve some for the exclusive access of residents and others for shared access with visitors, thus guaranteeing a space not subject to an influx of visitors from the city.
3. Provisionally introduce the **library card**, which is public, free and immediate, as a complement to the resident's card and for the members of the Gaudir+ register, in order to facilitate a quick and universal access to all residents of Barcelona.
4. Generate a **maximum flow of 1,400 people per hour** which establishes the Park's load capacity at 4.5 million visitors. This is a reduction of 50% compared to the visitors in 2019 with long-term effects with regard to aspects associated with mobility, public transport, management, use of the park and a long list of many other items that aims to leave behind the maximum number of visitors that we have reached in recent years of around 9 million.
5. Generate two timeslots exclusively for residents, from 7 a.m. to 9.30 a.m. and 8 p.m. to 10 p.m. which will be known by the programme name **'Good morning, Barcelona'** and **'Good evening, Barcelona'**, respectively, with the aim of encouraging the daily use of the Park among its residents.
6. Reduce the number of parking spaces **reserved for coaches** by ten and only allow the platform to be used by people who have previously reserved tickets and prevent the possibility of the loading and unloading of coaches. This measure will mean a reduction in the mobility of vehicles and the access of visitors and it will also have other effects, such as the elimination of the shuttle service.



8.



9.



10.

7. Install an **access bollard** in carrer d'Olot and the surrounding area with the aim of reducing traffic in the district.
8. Schedule local **cultural actions** and facilitate the production of actions by entities in the surrounding area.
9. Not allowing access of **unregulated commercial activities**.
10. Encourage **communication** with citizens through social media.

The application of these measures has had an immediate impact with regard to the return of the citizens to the Park, to the diversity of its use and enjoyment of local and popular activities. Furthermore, as tourism has been increasing, these measures have seen a decrease in the number of visitors coming to the park by public transport or coaches without having made a previous reservation, which has resulted in lower vehicle mobility, less contamination and, now, less pressure on public transport. However, as can be observed in the report, the activities financed with the return of ticket sales have continued and they have an initial dual purpose: improve the living conditions and the services of the neighbouring districts, as well as the architectural and natural protection of our heritage.

Lastly, it is worth noting that these measures that we have applied will remain in place and constantly overseen, shared and followed by the citizens and will be adapted to the situation as and when required, always with the aim of improving the social use of the Park, promoting protection, cultural enjoyment, and minimising the negative external influences insofar as is possible, as set out in the framework of the Park Güell Strategic Plan.



03

Governance
2020



03

Governance
2020

After a long process involving the analysis, reflection and participation of experts and local residents, on 17 January 2018, Barcelona City Council approved the government measure **‘2017- 2022 Strategic Plan for Park Güell’**. This plan contains approximately 200 measures and has been allocated a budget of €24.9 million with one essential objective: the return of social use of the Park to the city.

Park Güell occupies 19 hectares divided between five of the city’s districts, of which 1.7 hectares are regulated. The first step of the plan involves diagnosing the current situation and the problems resulting from overcrowding and the impacts this has on factors such as mobility, the increase in public transport and the quality of life of neighbours in the surrounding area. However, the most important impact has undoubtedly been the undoing of the ties between the city and its Park. (link to the strategic plan on the website: <https://ajuntament.barcelona.cat/ecologiaurbana/ca/amb-qui-ho-fem/participacio-ciutadana/park-guell>)

The strategic plan therefore seeks to strengthen the bond between Barcelona’s residents and the Park, avoiding the consequences of tourist overcrowding and improving the environment. Furthermore, it aims to redirect investment and, in addition to the preservation of heritage, prioritise other activities that directly benefit the surrounding neighbourhoods: protection from media exposure, reducing traffic in the surrounding area, improving biodiversity or reducing the presence of people taking video footage on the one hand; and on the other, a wider range of local cultural activities, a new approach to preserving heritage, investment in the surrounding neighbourhoods or the involvement of social, economic and neighbourhood movements in the governance of the Park. These are just a few of the measures that seek to reduce the impact of overcrowding, promoting community use, improving mobility or ensuring the Park has a living cultural heritage.

All of this is structured around a new governance model that looks to coordinate and involve the different city authorities that participate in the management of the Park, its neighbours and the institutions through the Promotion and Monitoring Group, the working groups, and the other spaces and mechanisms. This model, in which the city’s different operators are involved, is coordinated by the Technical Secretariat for Park Güell and defined in an assignment approved by the Government Commission on 4 October 2018. In addition to other factors, this model requires that an annual report is written up for each year that the engagement lasts. This report covers the rollout of the Strategic Plan during the final quarter of 2018 and throughout 2019.

The government measure describes the governance model that establishes a specific organisational approach. To ensure that the institution functions properly, it is considered essential to include all groups involved in the purpose of the organisation, whether directly in the decision-making process or in some other participative manner.

To this end, a body has been appointed to Park Güell to ensure that this space, in which so many different stakeholders are involved, is managed efficiently.

With this in mind, the creation of a Park Güell Government Measure Promotion and Monitoring Group was proposed, as the ultimate authority in terms of consultation and participation; this Group must facilitate and improve the knowledge, awareness, protection, management and transformation of Park Güell and the surrounding area by implementing the actions set out in the measure. On 28 June, the **Promotion and Monitoring Group for the Park Güell Government Measure** was constituted at Casa Pere Jaqués.

Organisational structure

The Promotion Group is assisted by the working groups in accordance with the lines of intervention or action priorities; their goal is to discuss, analyse and create proposals and monitor actions that require specific knowledge. To begin, three working groups are established: the facilities and public space group, the mobility group and the heritage working group.

The governance model is supported by the Executive Technical Committee, which manages the Park on a daily basis and oversees compliance with the government measure and the corresponding actions.

The Executive Technical Committee, which has a horizontal technical composition and is executive in nature, is structured around a consensus-based decision-making and organisational model.

The Committee will consist of at least one technical representative from each city operator involved, with each one reporting to their corresponding operator.

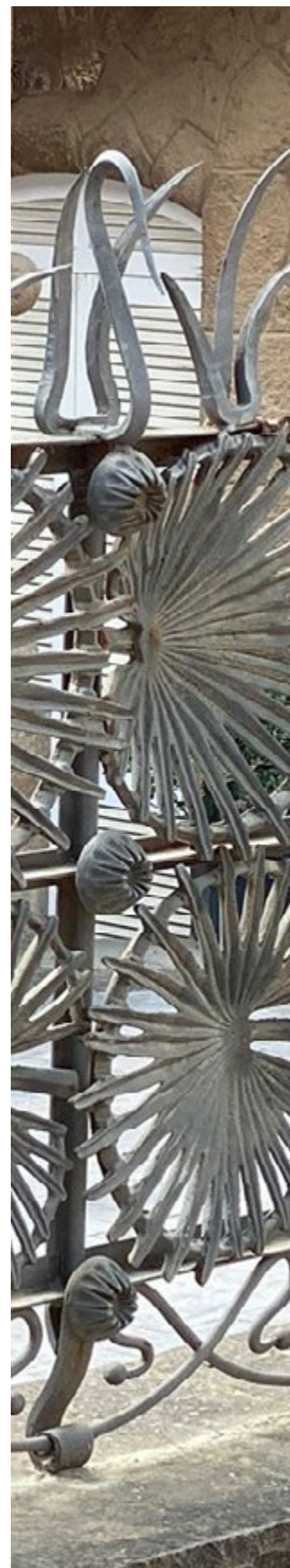
The Executive Technical Committee must define its own ordinary operating routine.

The Park's permanent operators include the Urban Ecology Manager's Office (Environment and Urban Services, Parks and Gardens, Municipal Institute of Urban Planning and Barcelona d'Infraestructures Municipals, S.A.), Barcelona de Serveis Municipals, the Municipal Institute for Culture and the districts of Gràcia and Horta-Guinardó.

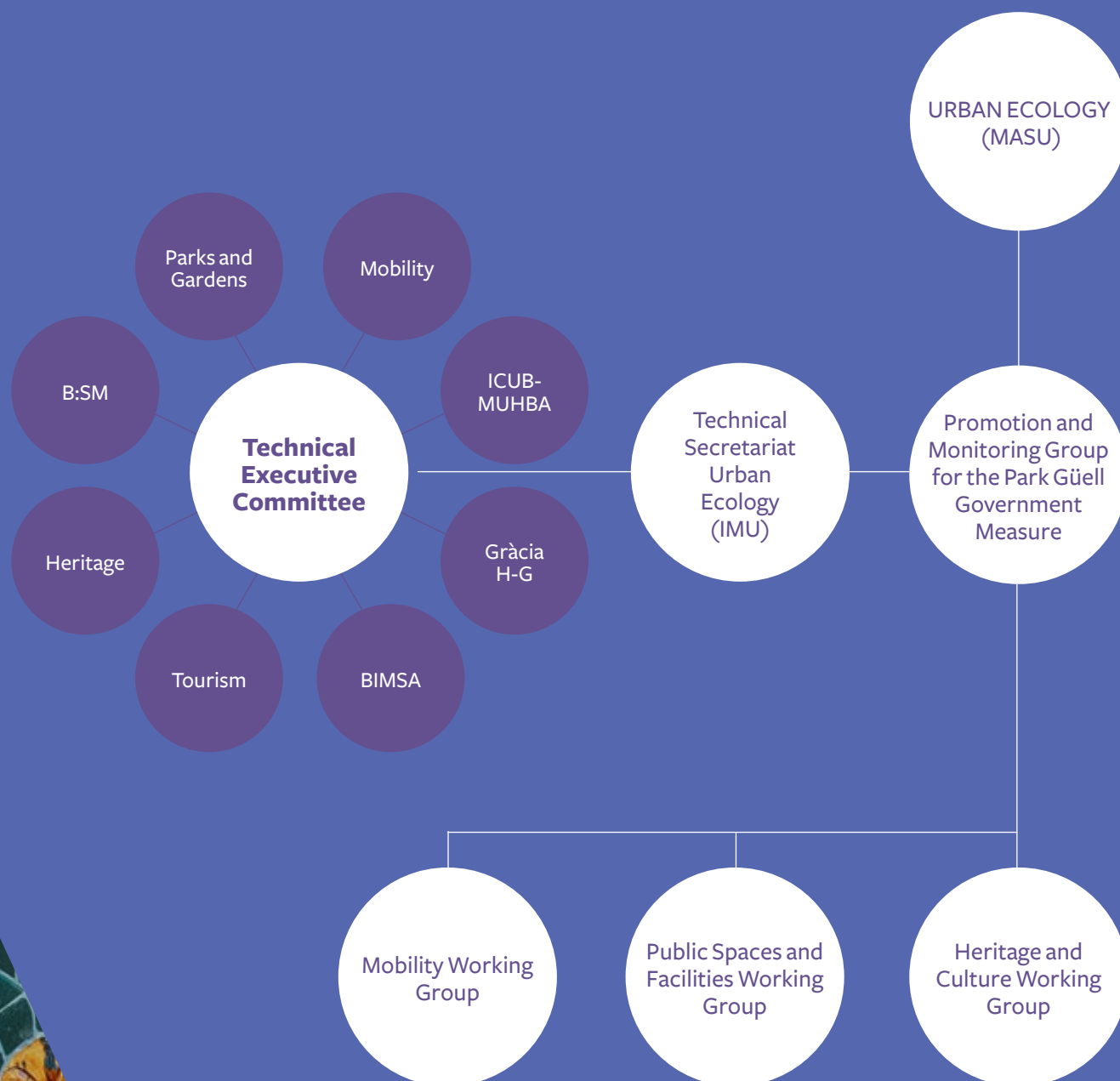
Technical Secretariat for Park Güell: The Technical Secretariat has a clear cross-cutting vision and coordinates the different city authorities. To this end, in coordination with the Environmental and Urban Services Manager's Office, which is responsible for the Park, it promotes this type of project for which Urban Ecology is responsible through the Municipal Urban Planning Institute, which appoints the management and decides on the composition of the Technical Secretariat.

Municipal Urban Planning Institute (head of the Technical Secretariat). Barcelona City Council is responsible for this local public-owned company which is tasked with coordinating cross-departmental projects run by the Urban Ecology Manager's Office in which different dependent bodies serving a territorial and participatory purpose are involved.

The Government Measure describes the governance model that establishes a specific organisational approach.



Organisational structure



Promotion and Monitoring Group for the Park Güell Government Measure (2019-2023)

Barcelona City Council

Second Deputy Mayor's Office

Sixth Deputy Mayor

Councillor's Office for the District of Gràcia

Councillor's Office for the District of Horta-Guinardó

Councillor's Office for Tourism and Creative Industries

Municipal Manager's Office

Manager's Office for Environmental and Urban Services

Managing Director of B:SM, S.A.

ERC Municipal Group

Barcelona en Comú Municipal Group

PSC Municipal Group

Ciutadans Municipal Group

JuntsxCat Municipal Group

PP Municipal Group

Properties

Sagrada Família Foundation

Barcelona Education Consortium

Casa Trias

Groups of experts

Architects' Association of Catalonia

Head of the Gaudí Chair

Biologists' Association of Catalonia

Technical Secretariat

Municipal Institute of Urban Planning

Residents and neighbourhoods

Barcelona Federation of Residents' Associations (FAVB)

Representatives of the La Salut, Vallcarca, Can Baró, El Carmel, El Coll and el Baix Guinardó neighbourhoods

The Park Güell government measure (January 2018) seeks to ensure that the institution functions properly, including all groups involved in the purpose of the organisation is considered essential, whether directly in the decision-making process or in some other participatory manner. These groups consist of local or industrial institutions in addition to city officers, professionals and experts, depending on the topic in question.

Operators

The governance model is supported by an Executive Technical Committee that coordinates all the operators involved in running the Park on a daily basis.

Parcs i Jardins





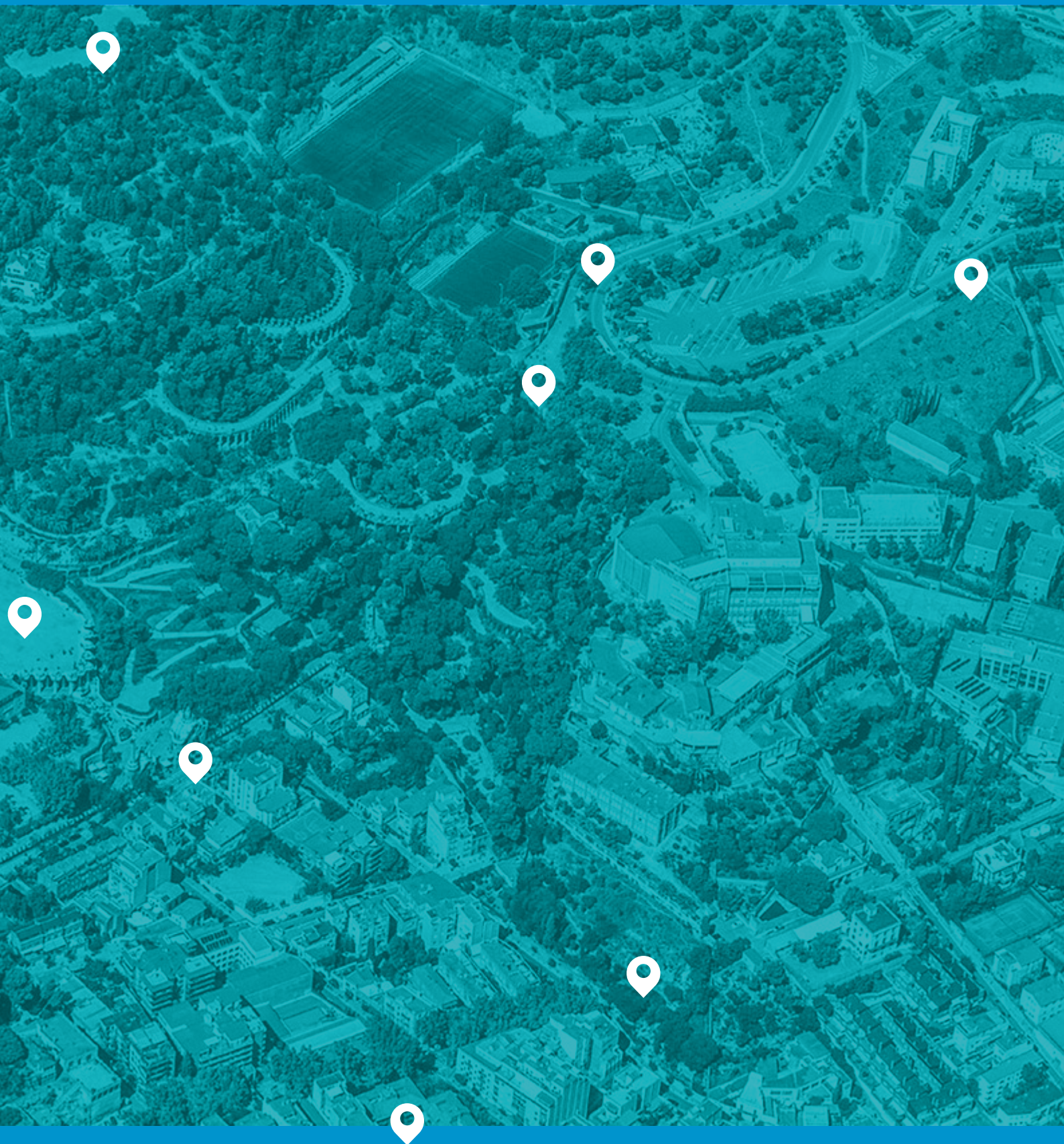


04

2020 Actions







04.1

2020 Actions

Consolidate and expand the policy that currently makes it possible for local residents to use the Park during specific time slots

Code

1.1-4

INCREASE IN
SOCIAL USE

Dates (start/end)

07-2020

Cost

NO DIRECT
ALLOCATION

Operator

B:SM Barcelona
de Serveis
Municipals

Description

‘Implementation of two time slots exclusively for the residents of Salut, Vallcarca i els Penitents, el Coll, el Carmel i Can Baró i holders of the Gaudir+ card: – ‘Good morning, Barcelona’ and ‘Good evening, Barcelona’ (adjusted to solar time)’



Resume the activity of having an aperitif at the Joan Sales viewpoint

Code

1.1-24

INCREASE IN
SOCIAL USE

Dates (start/end)

2020
2020

Cost

NO DIRECT
ALLOCATION

Operator

Districtes

Description

The viewpoint is located on the Carmel hill and can be reached from Park Güell. The whole Barcelona metropolitan skyline can be seen from this vantage point. The District has promoted that it be a place that is not simply for walking, but also where the residents can spend their time.



Children's play area in the cul-de-sac on carrer Sant Cugat del Vallès (up for tender)

Code

1.2-11

INCREASE IN
SOCIAL USE

Dates (start/end)

02-2020

11-2021

Cost

€137,054

Operator

BIM/sa Barcelona
d'Infraestructures
Municipals

Description

'Conversion of the cul-de-sac on carrer Sant Cugat del Vallès (affected area of 216 square metres), touching Larrard and Park Güell from the current parking area for motorbikes with bramble patches at the bottom, into a children's play area, and give it a specific usage to serve the residents of the area and generate a pleasant and safe area for the neighbourhood. There are plans to install a hut, swings and a see-saw, with benches, shrubs and climbing plants. The works are scheduled to last three months.'



New parks in the vicinity of Park Güell (Coll del Portell green area)

Code

1.1-20

INCREASE IN
SOCIAL USE

Dates (start/end)

11-2019

12-2021

Cost

budget:

€14,000

Operator

B:SM

Barcelona
de Serveis
Municipals

Description

The urban planning project for the Coll del Portell access is up for tender. The aim is to create a more dignified residential area, improve its functionality and locate a logistics building for the Park Güell Parks and Gardens and Architectural Heritage services.



Calendar of local schools with activities in the Park

Code

1.1-25

INCREASE IN
SOCIAL USE

Dates (start/end)

11-2020

Cost

NO DIRECT
ALLOCATION

Operator

Parcs i Jardins

Description

'Park Güell made its spaces available to schools in the local area to be used for educational purposes from September 2020, with the commencement of the 2020-21 academic year.

The measure, approved by the Barcelona City Council with the supervision of the Education Consortium, aims to provide all the centres that have a need for additional areas in order to carry out their classes under the conditions and safety measures to prevent the spread of Covid-19.'





Project to install lockers at Park entrances

Code

NEW
2020

INCREASE IN SOCIAL
USE

Dates (start/end)

12-2020
06-2021

Cost

budget
€60,000

Operator

B:SM Barcelona
de Serveis
Municipals

Description

Project to install lockers at five of the accesses to Park Güell: Coll del Portell, Baixada de la Glòria, Forat del Vent, Casa Trias and Can Xiro. These structures, equipped with a counter, interior lighting, windows and secure locks will be for the exclusive use of access control staff.



Construction of a pedestrian barrier along Carretera Carmel

Code

3.6-10

MOBILITY

Dates (start/end)

02-2020

03-2020

Cost

€6,000

Operator



Description

Construction of a guard rail on one side of the carretera del Carmel road which provides access to the Park to prevent pedestrians and users of the public bus service from crossing the road before reaching the crossing.



Replacement of the Baixada de la Glòria downward escalator

Code

3.7-56

New (October)

MOBILITY

Dates (start/end)

03-2020

06-2020

Cost

€370,767

Operator

BIM/sa Barcelona
d'Infraestructures
Municipals

Description

The works for replacing the intermediate escalator at baixada de la Glòria, between carrer Verdi and carrer Sostres. The works consisted of the disassembly of the escalator, the adaptation of the pit and associated installations tasks and the subsequent installation and start-up of the new escalator. A crane and large specialised vehicle were used in the replacement and transportation of the new escalator, but access to the residential properties was guaranteed at all times.





Traffic calming in the Olot, Rambla Mercedes, Marianao and Sant Josep de la Muntanya areas.

Code

3.8-50

MOBILITY

Dates (start/end)

04-2019

12-2020

Cost

€167,309

Operator



Ajuntament de
Barcelona

barcelona.cat/
ecologiaurbana

Description

Action focused on the creation of a restricted mobility area marked out by automatic bollards to allow access only to residents, local buses and emergency services between carrers Olot-Larrard-Marianao-Mercedes as far as la rambla de Mercedes. This automatic bollard system is connected to the Transit Control Centre 24 hours a day to attend to any incident that may arise. The purpose of this restricted area is to reduce the traffic in the area, particularly the streets around Park Güell, to improve road safety for pedestrians, reduce the pressure and impact of taxis in this tourist area and outside transit while maintaining access to public transport. This action also includes the change of direction of the traffic along carrers Marianao and Larrard and the relocation of the taxi rank to la Rambla de Mercedes, and to maintain the local bus access to the restricted area, the school drop-offs and pick-ups and unloading between 9.30 a.m. and 11 a.m.



Master plan for infrastructures and services

Code

4.1-4

GREENERY AND
BIODIVERSITY

Dates (start/end)

03-2019

05-2020

Cost

€120,000

Operator

B:SM Barcelona
de Serveis
Municipals

Description

Work has been carried out on the Master plan for infrastructures and services of Park Güell since 2019, and under a previous engagement. The objective of the Plan is to establish general guidelines and proposals to guide the future actions affecting the infrastructures and services of Park Güell, all based on the in-depth knowledge of its history, the value of its heritage and landscapes, its morphology and current status of any damage, needs and requirements. The plan will be rolled out in four phases and the proposed actions defined must ensure the survival of the documentary, architectural and significant assets of the Park Güell.



Improvement of Font Sarva, access to the cistern, restoration of outdoor benches, restoration of Viaducte de Baix, reinforcement of balustrades and benches, and repair of the Hypostyle Room

Code

4.1-3

GREENERY AND
BIODIVERSITY

Dates (start/end)

12-2018

08-2020

Cost

€1,413,645

Operator

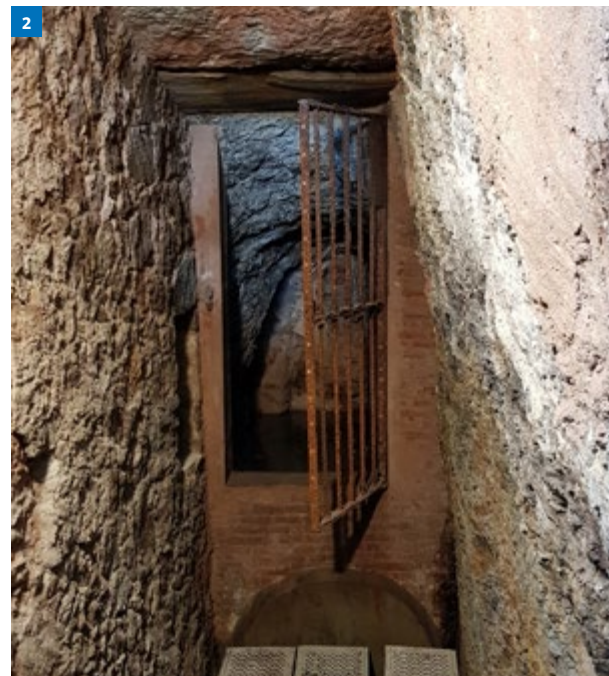
B:SM Barcelona
de Serveis
Municipals

Description

‘Complete the series of actions regarding the architectural heritage which have been in progress for two and a half years in the most emblematic areas of Park Güell. The temporary stoppage during the first few weeks of the health emergency did not prevent the restoration tasks from being completed as scheduled. The completion of the works allows visits to return to these areas, as well as a new area which until now was not possible to visit: Font Sarva, where the lighting, paths, guardrails and access gates have all been improved. With regard to the restoration of the banks in Nature Square, original Gaudí pieces found in other parts of the Park have been used and others that are reproductions of the originals. The entire ceiling of the Hypostyle Room has been fully renovated, which complements the waterproofing of the Nature Square, which was completed in 2019. Lastly, the original image of the Lower Viaduct has been restored according to photographs taken during the construction of the Park.’



1. Viaduct de Baix
2. Font Sarva
3. Restoration of the benches in Nature Square
4. Hypostyle Room



Font del Carbó development project

Code

5.4-10

QUALITY OF THE
BORDERS

Dates (start/end)

2020

2021

Cost

budget

€400,000

Operator

Parcs i Jardins

Description

Accessible from carrer Marianao, 2, this area dates back to 1941 and is where the fountain is located, made up of two polychrome ceramic platforms. The area, currently unused, has a surface area of 3,800 m² and when the repair works are finished, it is expected that it will include the Quirhort community project.



Ramiro de Maeztu plot development project

Code

5.4-13

QUALITY OF THE
BORDERS

Dates (start/end)

03-2019

12-2021

Cost

budget

€350,000

Operator

BIM/sa Barcelona
d'Infraestructures
Municipals

Description

The Final Project includes the replacement of the existing bus stop with a canopy, the installation of traffic lights, changing road markings and signal, the installation of new urban furniture, changes to the existing facilities, moving the affected lights, erecting a retaining wall in the sloped area and the paving of pavements as part of the works to create steps to resolve the unevenness of the pavement on these two streets.



Increase security staff outside Park opening hours

Code

8.4-13

SOCIOECONOMIC
SPHERE

Dates (start/end)

06-2020

Cost

€414,877.92

Operator

B:SM Barcelona
de Serveis
Municipals

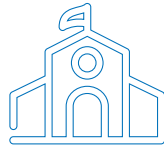
Description

The number of security guards at the Park is to be increased. This proposal is set out in the Park Güell Strategic Plan and adapts to the needs deriving from the new strategy for regulating and controlling the new access points of the Park. The entire monumental area will be monitored 24 hours a day by three security guards working rotating shifts.





Activities aimed at schools



30 January



Barcelona learning camps

Educational programme that offers centres the option of developing innovative projects with students to study the city from a global perspective

(Organised by the Barcelona Education Consortium)

Suspended

Day of Non-violence and Peace

On 30 January, the Baldiri Reixac School organised its annual March for peace through Park Güell to celebrate the School Day of Non-violence and Peace. On this day each year, the educational institutions commemorate a culture of non-violence and peace by committing to be champions of peace and understanding between people.

(Organised by the Baldiri Reixac School, Barcelona de Serveis Municipals, Parks and Gardens – EUM and Bosc Turull Environmental Classroom)

Ask Barcelona

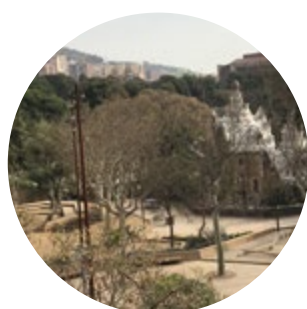
Activities containing educational material aimed at school groups.

Park Güell and nature (Year 1 and lower primary).

Park Güell project (middle and upper primary).

Güell, Gaudí and Barcelona. An urban perspective (compulsory secondary education, vocational training and high school/sixth form).

(Organised by the Barcelona History Museum through the Educational Coordination Council and the educational resources centres.)



20 March
Suspended

Institutional Act _ Inauguration of the new recreation areas at the Baldiri Reixac School

The Management and the children from the Baldiri school organised a series of events to reveal the new facilities. We hope to be able to celebrate it very soon.

(Organised by the Baldiri Reixac School.)

Postponed

III Edition of the 'Saint George and the Dragon of Park Güell' bookmark competition

For the third consecutive year, the bookmark competition was going to be held with students from nearby schools. The purpose was to promote creativity and reading among the children, while demonstrating the Park's value as a cultural space. The salamander or dragon is the most representative icon of the Park and can be interpreted in many different ways. The prize consisted in the publication of the three winning bookmarks, tickets to the Zoo and Tibidabo Amusement Park, and a thematic game relating to Gaudí and/or Park Güell.

(Organised by Barcelona de Serveis Municipals and schools)

Playing with sounds and colours

Activity aimed at nursery schools. This is a project involving inter-disciplinary work carried out through movement, music and art. The children work on the project at school, while the final session takes place in Park Güell during the three-day period.

(Organised by the Gràcia Educational Resources Centre, Barcelona de Serveis Municipals and the Barcelona History Museum.)

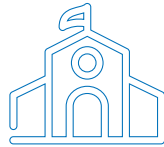
24, 25, 26 and
27 March
Suspended

The schools of Gràcia and Park Güell

The different educational phases of the educational centres in Gràcia, from nursery to post-education, are able to enjoy free activities behind closed doors. (Organised by Barcelona de Serveis Municipals, Gràcia Educational Resources Centre, the Gràcia district and the Barcelona History Museum).

(Organised by the Gràcia Educational Resources Centre, Barcelona de Serveis Municipals and the Barcelona History Museum.)

Activities aimed at schools



24, 25 and 26
April
Suspended

24, 25 and 26
April

Park Güell project

Activity aimed at middle school students, exploring the luxury residential project conceived by Antoni Gaudí and Eusebi Güell. The activity allows students to discover the Park's shapes and meanings and the links between the natural area and the Park's urban planning and architectural project.

(Organised by the Gràcia Educational Resources Centre, Barcelona de Serveis Municipals and the Barcelona History Museum.)

Elite properties inside the Park

Activity aimed at compulsory secondary education and high school/sixth form students that raises awareness of relationships between Park Güell and the city, society and the era in which they were constructed. They also analyse the architectural shapes and their aesthetic, symbolic and functional meaning.

(Organised by the Gràcia Educational Resources Centre, Barcelona de Serveis Municipals and the Barcelona History Museum.)

Participants: 435 students



Since August
2020

Up to 159 outdoor sites

Towards the end of August, the Barcelona City Council announced that it would make 159 outdoor sites available to schools in the event that they required more space to comply with the health measures due to the Covid-19 pandemic. Since then, Parks and Gardens, together with Barcelona de Serveis Municipals (B:SM) have coordinated the requests submitted by the centres through the District: the Reina Elisenda Virolai, Kotska Jesuits and Turó del Cargol schools. The Park's picnic areas and children's play areas are the spaces most in demand to give physical education classes and workshops and to spend time in the open air.



15 November

Learning about the diversity of the Park's flora

Primary students from the Baldiri Reixac School enjoyed a work session on species of the Mediterranean climate. They were able to learn first hand about plants with flowers, shrubs, trees and aromatic herbs that are used in medicine, cooking and cosmetics, as well as the importance of the balance between flora and fauna in the Park. The class took place in the Austria Gardens, Nature Square and the school itself, and was led by the Park's caretaker and manager.

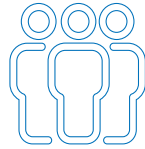
Barcelona 1902

Activity aimed at secondary school students involving the development of the area known as *Muntanya Pelada*. The visit takes them to Casa Trias, the only house that was ever built, to make the original project for the Park more comprehensible, explore its relationship with the city and show its historical context.

(Organised by the Gràcia Educational Resources Centre, Barcelona de Serveis Municipals and the Barcelona History Museum.)

Participants: 420 students

Cultural actions aimed at all citizens



21 March
Suspended



‘Urban hydrogeology, a walk-through Barcelona’ route

An informative event with three activities, guided by hydrogeologists and open to all members of the public. The aim is to raise awareness of subterranean water and its importance in the development and well-being of society, but also for ecosystems to function correctly.

(Organised by the Official School of Geologists)

27 March
Suspended

International Theatre Day

The event pays homage to the actor and singer/songwriter Ovidi Montllor to commemorate 25 years since his passing. The actress Anna Sahun, the singer Patricia Paisal and the pianist Miguel González participated in the event.

(Organised by the Gràcia District and B:SM.)



MUHBA
YouTube
channel
April



From 8 to 17
May *Virtual
format*



16 May
Suspended

Park Güell dialogues

As part of the **Park Güell Dialogues** cycle, in April, the Barcelona History Museum (MUHBA) offers us the opportunity to enjoy the captivating story between the two characters most closely connected to the Park's history: Salvador de Samà and l'Eusebi Güell, who wanted to create different gardens: 'The urban planning of the Marquis of Marianao and the park of Count Güell: a conflict of shapes, a social conflict' by Mar Leniz and Mireia Freixa. This activity is open to all members of the public and can be viewed by clicking this link.

Architecture Week

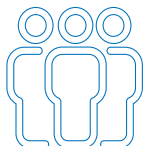
Celebrated this year from 8-17 May, visitors were offered to participate in an interactive activity to discover eight areas where water plays a significant role. The cistern of the Hypostyle Room at Park Güell was the second area that had to be discovered.

Gathering of La Salut Neighbourhood Organisations

4th Gathering of La Salut Neighbourhood Organisations. An event during which the organisations of the neighbourhood gather together, get to know each other and form bonds to make a network among themselves. The event is open to everyone.

(Organised by Salutem, in collaboration with B:SM.)

Cultural actions aimed at all citizens



MusicActiva summer camp

El Coll fête

Cross 3 Turons

Museum Night

(Organised by the MUHBA and B.SM.)



24 May
Suspended

The great Park Güell aperitif

Conferences, tastings, recitals and music, a culinary trip through what the citizens of Barcelona eat and drank in 1910. (Organised by the MUHBA and B:SM.)

(Organised by the MUHBA and B:SM.)



3, 10, 17 and 24
July

Guitar nights

Barcelona has always had a close bond with the guitar. The versatility and popularity of this instrument have allowed it to absorb musical influences from a great many regions and cultures, and become a vehicle for styles and traditions such as those that you will experience during the four concerts of this guitar cycle:

Classical guitar

Mediterranean and flamenco guitar

Mixed guitar

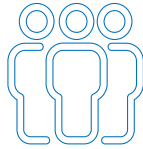
The guitar and jazz manouche

Summer concerts (organised by B:SM and MUHBA)

Total attendance: 1566



Cultural actions aimed at all citizens



Park Güell and Barcelona. Visits and routes.

Visit to the Casa del Guarda in Park Güell and a route that retraces the construction and formal arrangement of Park Güell and its relationship with the city of Barcelona.

(Organised by B:SM and MUHBA.)

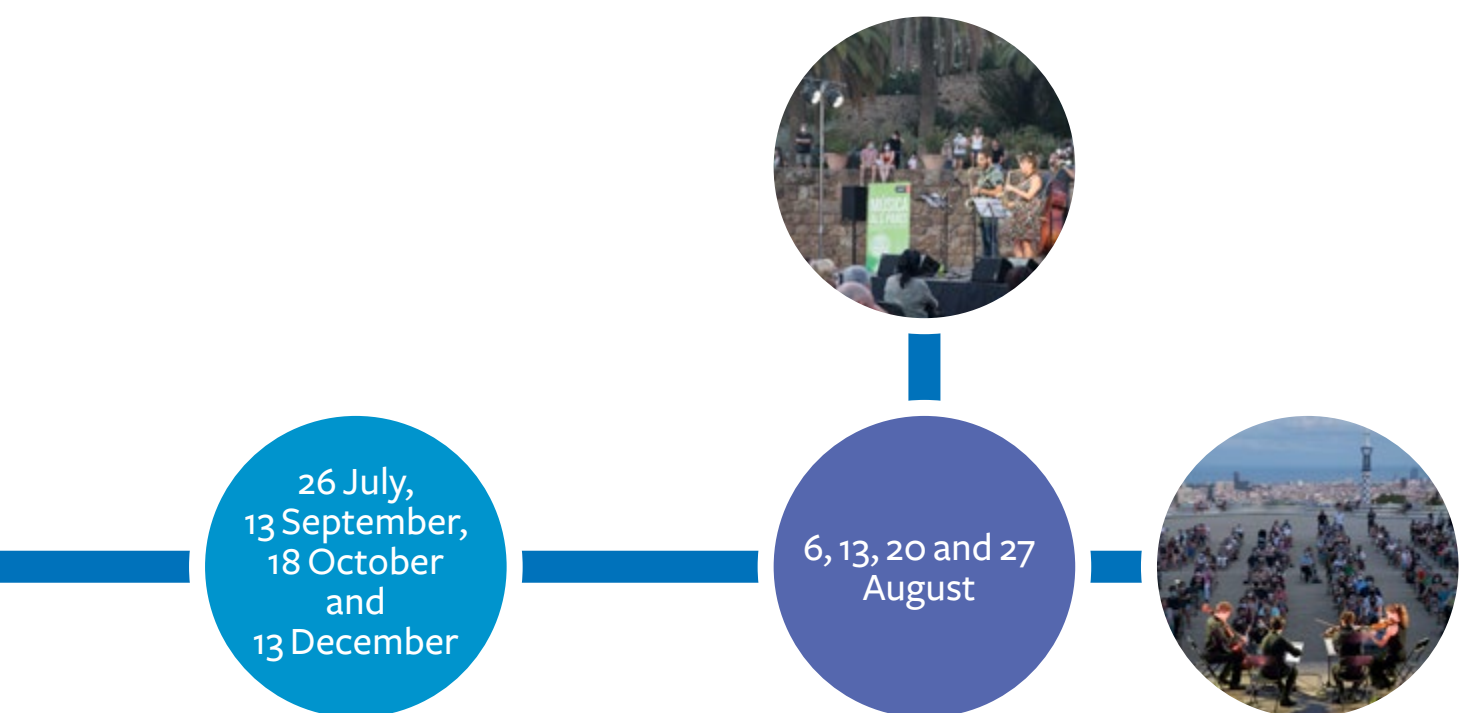


Barcelona's first viewpoint. The city's expansion seen from Tres Turons

Itinerary that recounts the successive events in the city's history that left their mark on the city's first mountainous viewpoint, Tres Turons, and then from El Carmel to Vallcarca, passing through Park Güell.

The route offers the opportunity to enjoy spectacular views over the city.

(Organised by B:SM and MUHBA.)



Gràcia 1900. The bourgeois showcase of a working class neighbourhood. Itinerary

Starting in the La Salut neighbourhood, a recreational space for the working classes and one of the spots chosen by Barcelona's elite to build their second homes at the turn of the 20th century, before taking in the streets of the former Vila de Gràcia, where it is still possible to admire the houses built during this time and witness traces of the conflicts and contradictions typical of a modern metropolis.

(Organised by B:SM and MUHBA.)

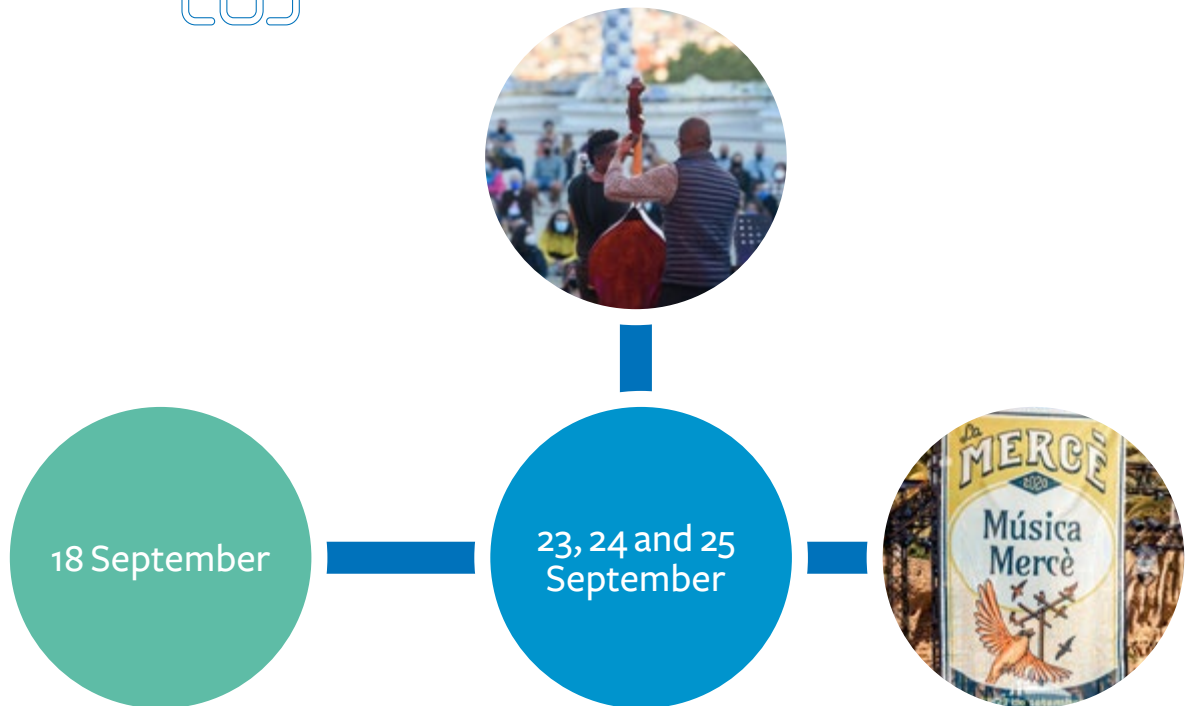
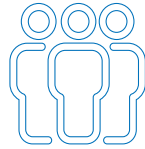
Music in the Parks cycle

During August, taking into account the progress of the lockdown exit stages, the City Council once again organised and promoted a shortened edition of the cycle with all the current safety measures in force, to bring quality music to all audiences and boost the possibilities of Park Güell as community and leisure space during the summer evenings and nights.

In celebration of the 25th anniversary of the cycle, artists such as Irene Reig and Héctor Floría, the Delia Quartet, Four Stable Mates and the Azalaïs Quartet played their best repertoires before 1,300 people.

(Organised by B:SM and Parks and Gardens.)

Cultural actions aimed at all citizens



Annual La Salut Festivities

The Nature Square hosted the celebrations of the La Salut Festivities with the participation of Batucargol and MusicActiva. For the first time in its history, Salutem handed over the organisation of the La Mercè festivities for 2020.

La Mercè Festivities 2020

For the first time in its history, Nature Square was the setting of some unusual La Mercè festivities over three days. Nearly 3,000 people were able to enjoy concerts and popular gatherings in the morning, evening and night. The performances by Calima, Pantanito with Marí Lionza, exhibitions of giants, Tarquim, Big Band Jam Session, Giulia Valle, The Goliards Collective and Rai Colom headed the billboard during this popular festivity.

(Organised by B:SM and the Barcelona Institute of Culture.)



1 August,
19 September,
21 November

**Barcelona 1902: Urban
development of Muntanya Pelada.
Itinerary**

Tour of Park Güell explaining the Park's
construction and creation process.

(Organised by B:SM and MUHBA.)



23, 24 and 25
October

Biennial of Thought

This event proposes a debate
amongst architecture professionals
who have been or are currently
responsible for Gaudí's works,
addressing the problems posed by
updating the techniques used by
Gaudí and the specific maintenance
that they require.

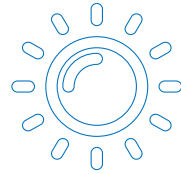
(Organised by B:SM and MUHBA.)

Christmas
2020

**Illuminated Hypostyle Room/
Christmas Wish Trees**

This year, Park Güell wanted to
become part of the city during the
Christmas holidays to give it a little
bit of light during these times, and
for this reason the lights of the
Hypostyle Room remained lit from
26 November to 7 January.

Sporting activities and other collaborations



29 February



Suspended

Bosc Turull Environmental Classroom

On 29 February, the Bosc Turull Environmental Classroom had an open day to celebrate the completion of the works extending the facilities with an additional 350 m², five platforms and a naturalised pond to study the aquatic ecosystem. Yusef Quadura, the Minister for Climate Emergency in the Gràcia District, officiated the inaugural act. He then handed over to the planned activities and workshops: planting activities, workshops on how to build bird feeding tables and a course on composting, as well as other activities. This activity had a cost of €544,000 and was financed with the return of the regulated tourism of Park Güell.

Park Güell Trail

Handicraft fair

Painters fair



21 March
Suspended

International Guide Day

To commemorate **International Guide Day**, on 21 February, Park Güell offered free guided visits to Barcelona citizens to raise awareness of the profession within a heritage site such as the Park and to take advantage of the visits to generate a debate on sustainable and quality tourism. This year, several groups were selected, such as personnel from the tourist sector, who are people affected by the job insecurity which sometimes occurs in the tourist sector, with different realities and problems.



October

Gaudí & trencadís

In October, Park Güell participated in the seminar organised around the travelling exhibition '**Gaudí & trencadís**'. All those that follow this technique know that the broken tile mosaic is one of the best known images that identifies the works of Antoni Gaudí, who, through the deft use of this decorative material, generated a rich combination of shapes, volumes, textures and also colours. This **seminar** also provided the key aspects to take into account regarding protecting and restoring broken tile mosaics and the ceramics used in the architecture. Further information is available on the YouTube channel: 'Gaudí & trencadís. The creativity of recycling'.

04.3

Activities in figures

**Current status of
the 199 proposals
in the Strategic
Plan (%)**

37.69%

To be implemented

10.55%

Implemented

41.71%

Finished/closed

10.05%

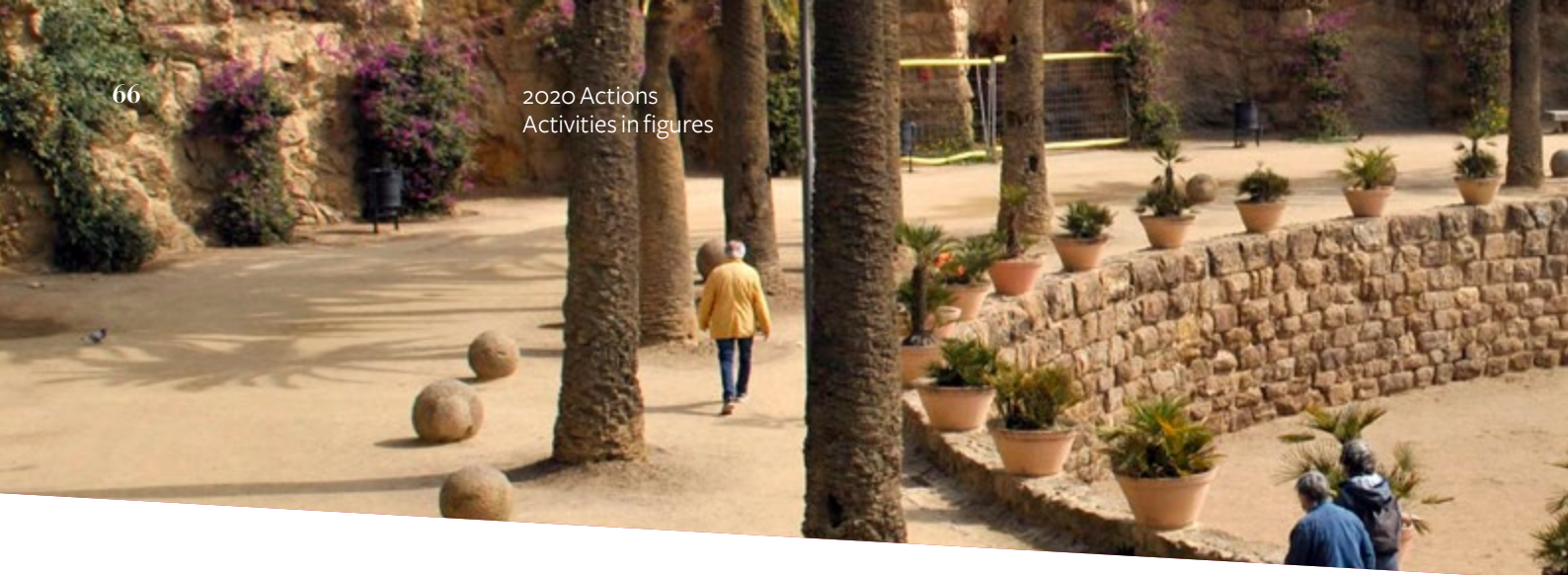
Ongoing/In progress





**Current status of
actions by scope
(%)**

	Completed	Ongoing/In progress	Implemented	To be implemented
1. Increase in social use	74.07%	11.11%	7.41%	7.41%
2. Reduction of impact caused by overcrowding	81.25%	12.50%	-	6.25%
3. Mobility	17.86%	3.57%	1.79%	76.79%
4. Greenery and biodiversity	33.33%	-	44.44%	22.22%
5. Quality of the borders	12.50%	21.88%	12.50%	53.13%
6. Access to the regulated zone	100.00%	-	-	-
7. Cultural sphere	86.36%	-	9.09%	4.55%
8. Socioeconomic sphere	38.89%	33.33%	-	27.78%



1. Increase in social use

	Proposal No.	FINISHED/CLOSED	Operator
1	1.1-1	Create a schedule with the organised activities currently on offer at the Park and generate new ones (*)	Technical Secretariat
2	1.1-2	Resume historic activities where possible (*)	ICUB
3	1.1-3	Identify groups that can generate neighbourhood activities within the Park (Sardana groups, popular activities, music concerts, street theatre, performing arts, sporting activities, etc.) (*)	ICUB
4	1.1-4	Consolidate and expand the policy that currently makes it possible for local residents to use the Park during specific time slots (*)	B:SM
5	1.1-5	Include the social fabric in the Park's governance model	Technical Secretariat
6	1.1-8	Promote the use of school playgrounds or other services in the area for activities involving local residents	B:SM
7	1.1-9	Sign-posting of the most appropriate paths for use by the elderly (closed)	
8	1.1-12	Expand the services offered at the Vilorai viewpoint (toilets and mobile cafeteria) (closed)	
9	1.1-13	Expansion of services at Anti-aircraft Bunkers (toilet) (closed)	
10	1.1-14	Improvements to urban furniture in the woodland (closed)	
11	1.1-22	More spaces in the Park dedicated to sport	
12	1.1-23	Activities aimed at children and adolescents	
13	1.1-24	Resume the activity of having an aperitif at the Joan Sales viewpoint	District
14	1.1-25	Calendar of local schools with activities in the Park (*)	Technical Secretariat
15	1.1-26	Benches for the elderly	
16	1.2-6	Restoration of the viewpoint overlooking Baixada de la Glòria	B:SM
17	1.2-7	New general signs across Park Güell	B:SM
18	1.2-15	Rehabilitation of heritage schools	Education Consortium
19	1.2-16	Improvement of Camí de la Pressió, children's play areas and restoration of the Biodiversity Route	B:SM
20	1.2-17	Repair of toilets on carrer d'Olot	B:SM

(*) Proposal activated permanently



	Proposal No.	ONGOING/IN PROGRESS	Operator
21	1.1-10	Improvement of the dog park in the woodland	BIMSA
22	1.1-19	Park Güell work centre	BIMSA
23	1.2-11	Children's play area in the cul-de-sac on carrer Sant Cugat del Vallès (up for tender)	BIMSA

	Proposal No.	IMPLEMENTED	Operator
24	1.1-20	New parks in the vicinity of Park Güell (Carbó Fountain – Coll del Portell green area)	B:SM
25	New 2020	Project to install lockers at Park entrances	B:SM

	Proposal No.	TO BE IMPLEMENTED	
26	1.1-18	Educational facilities (children's play centre)	B:SM
27	1.1-21	Children's facilities (Horta)	B:SM

2. Reduction of impact caused by overcrowding

	Proposal No.	FINISHED/CLOSED	Operator
1	2.1-1	Design of the 'Park Güell' website, providing a description of this urban park as living heritage: architectural, ecological and social values, cultural activities, in addition to improving communication between the Park and local residents, schedule of activities, forum, blog, etc.	B:SM
2	2.1-2	Reduction of the media exposure and image of Park Güell and diversification of the iconographic elements used in advertising (*)	Different operators
3	2.1-3	Reduction of filming/documentaries that may encourage visits (*)	Different operators
4	2.1-4	Definition of criteria for approving filming inside the Park to manage Park Güell's image (*)	Different operators
5	2.1-7	Continuation of communication campaigns about the need to purchase a ticket to enter the Park (*)	B:SM
6	2.2-9	Announcements in the metro to prevent an excessive number of visitors from accessing the Park (closed)	
7	2.2-10	Installation of sensors at the Anti-aircraft Bunkers to keep track of the number of visitors (closed)	
8	2.2-11	Stepping up surveillance in areas with a high heritage value or areas in which anti-social offences regularly occur (*)	B:SM
9	2.2-12	Temporary closure of Turó de les Tres Creus (days of high footfall) (*)	Parks and Gardens
10	2.3-13	Configuration of capacity for the summer and winter seasons or special days (Easter, Christmas) (*)	B:SM
11	2.3-14	Management of the sale of tickets to groups so that their visits take place at times of reduced demand (*)	B:SM
12	2.3-15	Market elasticity study (closed)	
13	2.3-16	Intention to implement online sales only (*)	B:SM

(*) Proposal activated permanently



	Proposal No.	ONGOING/IN PROGRESS	Operator
14	2.1-6	Communication campaigns highlighting the problem of overcrowding and the responsibility to conserve Park Güell as a symbolic and unique space.	Different operators
15	2.1-8	Installation of sensors at entrances to keep track of the number of visitors	B:SM
	Proposal No.	TO BE IMPLEMENTED	
16	2.1-5	Increase in fees charged to shoot films or documentaries	

3. Mobility

	Proposal No.	FINISHED/CLOSED	Operator
1	3.1-3	Detailed study of the Olot, rambla Mercedes, Marianao and Sant Josep de la Muntanya area.	B:SM
2	3.4-4	Relocation of bus stops next to Park Güell of the 24 and 92 bus routes	Mobility
3	3.4-5	Study of the Park Güell access shuttle. Relocation of Bus Turístic stops.	B:SM
4	3.6-10	Construction of a pedestrian barrier along carretera Carmel	Mobility
5	3.7-43	Update of the official Park Güell website with mobility information (*)	B:SM
6	3.7-45	Update of the map on the official Barcelona City Council website	B:SM
7	3.7-46	Periodic collection of mobility data on visitors to Park Güell	B:SM
8	3.8-50	Traffic calming in the Olot, Rambla Mercedes, Marianao and Sant Josep de la Muntanya areas.	Mobility
9	3.8-53	'Park Güell as a route to school' (Including the project to implement traffic calming measures along carrer d'Olot and the surrounding area)	Mobility
10	3.7-56 New (October)	Replacement of the Baixada de la Glòria downward escalator	BIMSA
	Proposal No.	ONGOING/IN PROGRESS	Operator
11	3.6-11	Repair of the pavement along Ramiro de Maeztu	BIMSA
12	3.6-12	Repair of the pavement along Albert Llanas	BIMSA
	Proposal No.	IMPLEMENTED	Operator
13	3.6-20	Expansion of the bicycle parking network: 14 new stations	Mobility

(*) Proposal activated permanently



	Proposal No.	TO BE IMPLEMENTED
14	3.1-1	Enhancement and signposting of the Lesseps-Park Güell route
15	3.1-2	Enhancement and signposting of the Vallcarca-Park Güell route
16	3.6-6	Creation of pedestrian crossings. Total of 18 crossings
17	3.6-7	Adaptation of pedestrian crossings. Total of 12 crossings
18	3.6-8	Signposting of pavements with cul-de-sac. Total of 2
19	3.6-9	Drafting of the Plan for pedestrian signposting
20	3.6-13	Single platform on Passatge de Ros
21	3.6-14	Single platform on avinguda Can Baró
22	3.6-15	New Pare Jacint Alegre – Antequera connection
23	3.6-16	New Park Güell Picnic Zone – Marianao picnic area connection
24	3.6-17	New passatge Turull – avinguda del Coll del Portell connection
25	3.6-18	New Porta Forat del Vent – Mirador Virolai connection
26	3.6-19	Project to improve accessibility inside Park Güell: adaptation of paths for people with reduced mobility
27	3.6-21	Increased bicycle parking capacity: 9 points
28	3.6-22	Review of underused bicycle parking spaces
29	3.6-23	Creation of signposted routes using cycle lanes
30	3.6-24	Improvement of the 116 neighbourhood bus service



3. Mobility

	Proposal No.	TO BE IMPLEMENTED	Operator
31	3.6-25	Improvement to bus stops. Includes three new schedules	
32	3.6-26	Improvement to bus stops. Improvement to accessibility with new pavements or pedestrian crossings. Total of 11	
33	3.6-27	Improved signposting on metro platforms and facilities	
34	3.6-28	Update of online information on the location of bus stops	
35	3.6-29	One-off change to the route of the 87 bus line	
36	3.6-30	Improved direction signposting for coaches	
37	3.6-31	Installation of traffic lights. Total of 4	
38	3.6-32	Change of direction of traffic	
39	3.6-33	Minimisation of incorrect parking	
40	3.6-34	Redesign of the Torrent del Remei – Farigola car park	
41	3.6-35	Painting of car parking spaces. Carrer del Portell	
42	3.6-36	Painting of car parking spaces. Avinguda del Coll del Portell	
43	3.6-37	Painting of car parking spaces. Carrer de Joan Cortada	
44	3.6-38	Painting of car parking spaces. Carrer de Ramiro de Maeztu	
45	3.6-39	Painting of car parking spaces. Carretera del Carmel	
46	3.6-40	New car park at El Carmel football pitch	BIMSA

(*) Proposal activated permanently



	Proposal No.	TO BE IMPLEMENTED	Operator
47	3.6-41	Improved flow of traffic between Mare de Déu de la Salut and Secretari Coloma	
48	3.6-42	Installation of traffic calming measures on carrer Mare de Déu del Coll	
49	3.7-44	New information platform between Park Güell and public transport	
50	3.7-51	Analysis of amendments to the green zone (residents only parking)	Mobility
51	3.7-55	Locate electric bicycles	
52	3.8-47	Study segregated stops	
53	3.8-48	Encourage public transport workers to learn English	
54	3.8-49	Consider the installation of public transport ticket vending machines at stops	
55	3.8-52	Improvements in traffic calming on Mare de Déu de la Salut	
56	3.8-54	Bicycle circuits in the Park	

4. Greenery and biodiversity

	Proposal No.	FINISHED/CLOSED	Operator
1	4.1-2	Improvement to the area surrounding Font de Sant Salvador and the adjacent steps	B:SM
2	4.1-3	Improvement of Font Sarva, access to the cistern, restoration of outdoor benches, restoration of Viaducte de Baix, reinforcement of balustrades and benches, and repair of the Hypostyle Room	B:SM
3	4.1-4	Master plan for infrastructures and services	B:SM
4	4.1-16	Separation of the irrigation system water service and burial of the Casa Trias overhead services (included in the Master plan for infrastructures and services) (closed)	Parks and Gardens
5	4.1-17	Separation of the sewage and rainwater along passeig de les Palmeres (included in the Master plan for infrastructures and services) (closed)	Parks and Gardens
6	4.1-18	Creation of a gallery of services on passeig de les Palmeres (included in the Master plan for infrastructures and services) (closed)	Parks and Gardens
7	4.1-22	Increased maintenance and surveillance of green areas (closed)	Parks and Gardens
8	4.1-26	Security, emergencies, surveillance and fire plan	Parks and Gardens
9	4.1-27	Provide Parks and Gardens with more resources (*)	Parks and Gardens

	Proposal No.	IMPLEMENTED	Operator
10	4.1-1	Park Güell Volunteering Centre	BIMSA
11	4.1-5	Facilities master plan	BIMSA
12	4.1-6	Stabilisation of pathways (from Casa Trias to Tres Creus)	Technical Secretariat
13	4.1-7	Closure of Coll del Portell from Plaça d'Arnold Schömborg	
14	4.1-9	Closure of the wooded area to private vehicles and improving access to service and emergency vehicles	

(*) Proposal activated permanently



	Proposal No.	IMPLEMENTED	Operator
15	4.1-10	Expansion of automated irrigation and the irrigation network outlets to the central area near Font de Sant Salvador (installation of primary pipes across the 6 hectares and irrigation points; opening and reworking paths)	Parks and Gardens
16	4.1-13	Project to improve the Joan Sales viewpoint (Viloraí) (connection to Tres Turons, repair vegetation, irrigation system, stabilisation of the slope, accessibility, etc.)	Parks and Gardens
17	4.1-14	Repositioning of <i>Phoenix Canariensis</i> to Passeig de les Palmeres (36 units)	Parks and Gardens
18	4.1-20	Increased greenery in the plots around the Olot children's play area, on the Passeig de les Palmeres plot from Casa Trias to the dining area and the area beneath Tres Creus	Parks and Gardens
19	4.1-23	Increase the Park's biodiversity, installation of nesting boxes, feeders, bat boxes, insect hotels or other elements	Parks and Gardens
20	4.1-24	Promotion of native bush species that flourish in winter (the Park as a refuge and as a source of resources for bird life)	Parks and Gardens
21	4.1-25	Relocation of the landfill and adaptation of the surrounding area. Includes the stabilisation of soil, demolition of the existing structure, removal of the existing landfill and landscaping the surrounding area.	Parks and Gardens

	Proposal No.	TO BE IMPLEMENTED	
22	4.1-8	Connect all firefighting hydrants to the entire wooded area	
23	4.1-11	Stabilisation of plots (stabilisation of slopes, adding soil and plants and irrigation)	
24	4.1-12	Improvement of cork oaks with emblematic catalogued wooded areas (2 <i>Ceratonia Siliqua</i> , 1 <i>Olea Europaea</i> and 1 <i>Pistacea Lentiscus</i>)	
25	4.1-15	Wall vegetation at the Sant Josep de la Muntanya entrance	
26	4.1-19	New stabilisation system for the main path to Passeig de les Palmeres (excavation and reworking of paths covering 3,520 m ²)	
27	4.1-21	Increase in undergrowth to avoid erosion and run-off	

5. Quality of the borders

	Proposal No.	FINISHED/CLOSED	Operator
1	5-5-18	Increase the importance of the gate to El Coll, the main access point to the wooded area and providing direct access to Font de Sant Salvador	BIMSA
2	5-5-23	Connection of Carretera del Carmel with access to Park Güell using LED (included in the Master plan for infrastructures and services) (closed)	BIMSA
3	5-5-25	Project to update the lighting on the streets around Park Güell to LED (included in the Master plan for infrastructures and services) (closed)	BIMSA
4	5-6-32	Recreational spaces in the wooded area	District
	Proposal No.	ONGOING/IN PROGRESS	Operator
5	5-1-2	Improvement to the section of carrer Turull (tanks, walls and parking)	BIMSA
6	5-4-9	Remodelling of the entrance on Carretera del Carmel to Park Güell	BIMSA
7	5-4-11	Redevelopment of carrer de l'Alguer	BIMSA
8	5-4-12	Final project for the redevelopment of Baixada de la Glòria	District
9	5-4-13	Ramiro de Maeztu plot development project	BIMSA
10	5-4-15	Redevelopment of carrer d'Antequera	BIMSA
11	5-5-24	Repair of stairs on carrer de Ceuta	BIMSA
	Proposal No.	IMPLEMENTED	Operator
12	5-1-1	Improvement of Avinguda del Coll del Portell at the entrance to the Park (section with parking, walls and views of Collserola)	BIMSA
13	5-2-4	Improvement of the area around the dog park at the El Coll entrance (paths, vegetation, benches)	BIMSA
14	5-4-10	Font del Carbó development project	BIMSA
15	5-5-21	Signposting of the connections to Parcs dels Tres Turons	Urban Model Department



	Proposal No.	TO BE IMPLEMENTED
16	5.1-3	Final project for Rambla Mercedes, between Sant Josep de la Muntanya and avinguda del Coll del Portell
17	5.2-5	Recovery of the green areas on carrer Sant Josep de Cottolengo, between carrer d'Antequera and Passatge de la Sagrada Família
18	5.2-6	Treatment of the access path from Riu de la Plata and Pau Ferrant using materials and non-invasive interventions that are respectful of the wooded area and the surrounding area
19	5.3-7	Mitigation of the impact of the buildings located in the nearby area
20	5.3-8	Improvement of Plaça de la Mitja Lluna
21	5.4-14	Redevelopment project for carrer de Tirso
22	5.4-16	Redevelopment project for carrer de Tirso
23	5.4-17	Project to open carrer d'Arnold Schönberg to carrer Repartidor
24	5.5-19	New connection from carrer de Marianao
25	5.5-20	Improve the visibility of the gates to El Carmel (Riu de la Plata, Pau Ferran, Coll del Portell)
26	5.5-22	Improve the quality of routes for local residents connecting nearby neighbourhoods (inside the Park and the surrounding area)
27	5.5-26	Redevelopment project for the steps on carrer d'Haití
28	5.5-27	Installation of handrails and grips on streets with steep slopes in the area surrounding Park Güell
29	5.5-28	Installation of benches and seats in the streets close to Park Güell
30	5.5-29	Elevator project on carrer de Mossén Batlle
31	5.5-30	Elevator works on carrer de Mossén Batlle
32	5.6-31	Steps between Catalunya Swimming Club and El Carmel
31	5.6-31	Steps between Catalunya Swimming Club and El Carmel
32	5.6-32	Recreational spaces in the wooded area

6. Access to the regulated zone

	Proposal No.	IMPLEMENTED	Operator
1	6.1	Reinforce and optimise the Gaudir+ system (*)	B:SM

7. Cultural sphere

	Proposal No.	FINISHED/CLOSED	Operator
1	7.1-2	High-quality approach to the Park's heritage as an integrated whole focussing on knowledge: history (before, now, after), terrain, wildlife, plants, hydrography, palaeontology, uses, post-history, urban planning, architecture, collective memory, art. (*)	ICUB
2	7.1-4	Promote the public's consideration of Park Güell as a <i>museum</i> : public space, urban laboratory and space of cultural innovation (closed)	
3	7.2-5	Creation of a wide-ranging, varied cultural offer (children, families, elderly, adults, women, etc.) both inside and outside the Park (*)	ICUB
4	7.2-6	Creation of more themed routes of varying durations covering different paths and interpretations of the Park (*)	ICUB
5	7.2-7	Schedule of activities that offer contemporary ways of looking at the Park and the surrounding neighbourhoods (*)	ICUB
6	7.2-9	Inclusion of cultural and artistic initiatives that take place in the neighbourhoods within Park Güell (*)	Technical Secretariat
7	7.2-10	Promotion of cultural activities by local residents through the communication channels with bordering neighbourhoods in Catalan (*)	ICUB
8	7.2-11	Support cultural initiatives and activities in the neighbourhoods and regulate musicians playing in the Park, focussing on promoting Catalan culture (*)	
9	7.2-12	Allow the neighbourhoods' cultural itineraries to be included in the regulated zone (*)	Districts
10	7.3-14	Retain Casa del Guarda as a space for exhibiting the Park's heritage (*)	ICUB
11	7.3-15	Provide Casa del Guarda with more resources (*)	ICUB
12	7.3-16	Recover the entrance pavilions and caves for public use (closed)	
13	7.3-17	Look at how the cistern beneath the Hypostyle Room can be made accessible and fully open for visits as a part of the heritage complex relating to water (*)	

(*) Proposal activated permanently



	Proposal No.	FINISHED/CLOSED	Operator
14	7.3-18	Promote the use of the 'Park Güell Barcelona' app as an audio guide (*)	B:SM
15	7.4-19	Promotion of studies and exhibitions on historic and oral memory corresponding to Park Güell (*)	ICUB
16	7.4-20	Catalogue of the Park's history and elements	B:SM
17	7.4-21	Catalogue of plant species	B:SM
18	7.4-22	Catalogue of fauna (closed)	
19	7.4-23	Continuous research programme relating to aspects of historic significance and knowledge of the Park's natural environment (*)	Catalan Society for Environmental Education
	Proposal No.	IMPLEMENTED	Operator
20	7.1-1	Park Güell as a centre of learning based on its uniqueness as an urban park of ecological, architectural and cultural heritage value	
21	7.1-3	Museum discourse catering to different visitor profiles: basic, non-specialist and specialist (*)	ICUB
	Proposal No.	TO BE IMPLEMENTED	
22	7.3-13	Create a new interpretation centre	

8. Socioeconomic sphere

	Proposal No.	FINISHED/CLOSED	Operator
1	8.1-1	Study of the impact of the new tourist bus and shuttle bus locations on local trade (closed)	B:SM
2	8.1-2	Improving the regulation to facilitate inspections (*)	District of Gràcia
3	8.1-3	Regulating permits for shops targeting tourism in the bordering neighbourhoods (*)	District of Gràcia
4	8.1-5	Increase the inspections of illegal tourist apartments around Park Güell at the beginning of the high season (*)	
5	8.3-8	Promotion of employment plans by the Park's bodies: Parks and Gardens and B:SM (*)	Parks and Gardens
6	8.3-9	Temporary job placement programmes for the Park's maintenance and gardening (*)	Parks and Gardens
7	8.4-12	Self-care plan (*)	B:SM and Parks and Gardens
8	8.4-13	Increase security staff outside park opening hours	B:SM
9	8.4-16	Communication campaigns with a view to informing visitors of the impact of purchasing counterfeit goods	
10	New 2018	Valuation of heritage (*)	B:SM

	Proposal No.	ONGOING/IN PROGRESS	Operator
11	8.3-7	Mediation with street sellers and street artist groups to understand their situation and reach a joint solution	ICUB
12	8.4-10	Reinforcement of security and sensor installations	B:SM
13	8.4-11	Mechanisation of the El Carmel gate	B:SM
14	8.4-14	Increase the presence of civic officers in the area in which most heritage is located and organise transit	B:SM
15	8.4-15	Study on the possibility of installing CCTV cameras to protect the heritage and organise transit	B:SM
16	New 2019	Creation of the final project for WiFi antennas	B:SM

(*) Proposal activated permanently



	Proposal No.	TO BE IMPLEMENTED
14	8.1-1	Study of the impact of the new tourist bus and shuttle bus locations on local trade
15	8.1-4	Creation of an economic development plan for the Gràcia district
16	8.1-6	Monitoring of the evolution of the property market based on the expected changes in the area to detect any gentrification process as soon as possible
17	8.4-13	Increase security staff outside park opening hours
18	8.4-16	Communication campaigns with a view to informing visitors of the impact of purchasing counterfeit goods

COMPLETED:

- » Actions executed by a municipal operator charged to the return fee of the regulated area, with its own budget and no direct cost, and adapted to the description of the Strategic Plan
- » Actions that are considered closed for the purposes of this report.

CLOSED:

- » Actions included as part of others within the Strategic Plan.
- » Actions included in the plans, reports or actions of one or more operators and which must be executed within the framework of a series of city-based actions.
- » Actions that are not carried out due to actions that directly or indirectly make them infeasible, or which have lost their original reason.

IMPLEMENTED:

- » Actions under study, being drawn up, implemented or executed initiated by one or more municipal operators and which once finished, are in line with the above description.
- » Actions that are of an ongoing nature with no completion date.

PENDING:

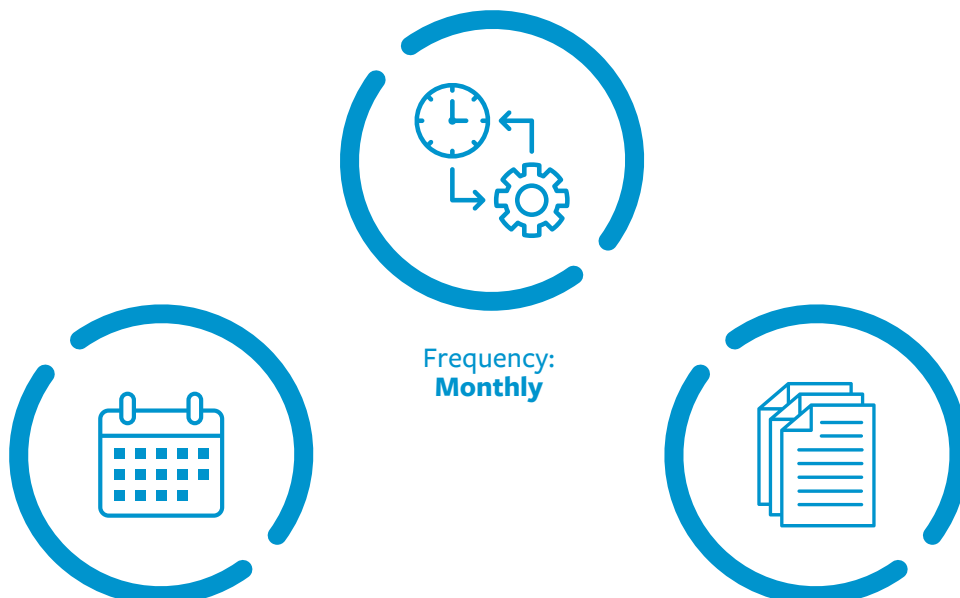
- » Actions not included in the executive schedule as at the date of the report.

04.4

Communications plan 2020



In 2020, the commitment to maintain the communication bonds between the Park and citizens was strengthened. The events that forced the temporary closure, the adaptation to new time slots and the health regulations have been transmitted through the social networks, corporate website and the Technical Secretariat Newsletter. This channel, which was first published in October 2018, has continued to transfer the dynamic aspects of the project, works, heritage, governance and green space areas, and has undertaken to maintain contact with Park Güell during the lockdown months.



Date of first edition:
15 January 2020

No. editions 2020
10 newsletters

[illegible][illegible][illegible]

Impact of Park Güell on the media

La Vanguardia

01.02.2020	The prideful mimosas of Park Güell
20.05.2020	As of today, all parks in Barcelona will be open during their regular opening hours
13.06.2020	Barcelona wants to stand out as a safe tourist city
19.06.2020	A farewell to spring in Park Güell
30.06.2020	Park Güell reduces its capacity and expands its offer to local residents
05.07.2020	Guide to rediscovering the tourist attractions of Barcelona
02.08.2020	Park Güell, Zoo and Tibidabo receive the Tourism Safety Seal
15.08.2020	Park Güell shows off the end of its renovation in solitude
07.09.2020	La Mercè will bring music to Camp Nou, Park Güell and la Modelo

El Periódico

12.01.2020	The origins of Park Güell
12.06.2020	The pandemic gives the citizens of Barcelona the chance to rediscover Gaudí
29.06.2020	Park Güell reduces its capacity to 50% and will facilitate access to the citizens of Barcelona
03.07.2020	MUHBA organises free guitar concerts in Park Güell
04.08.2020	Music in the Parks begins the day with a reduced edition during the month of August
16.08.2020	The mirage of Park Güell
07.09.2020	The La Mercè festivities will be held at unique places like Park Güell and la Model

Barcelona.cat/

20.02.2020	Inauguration of the extension of the Bosc Turull Environmental Classroom
29.05.2020	The Park Güell Dialogues Cycle, an x-ray photograph of a project and a portrait of an era
03.08.2020	The Music in Parks series of concerts is back this August
14.08.2020	Park Güell fights again

L'Independent de Gràcia

20.01.2020	Park Güell opens a biodiversity path with feeding tables for birds.
09.02.2020	Park Güell commences the works for the new mobility plan
30.04.2020	Park Güell will open with more greenery and more birds
19.05.2020	Park Güell restarts the works in the monumental area
01.07.2020	Park Güell concerts now in Nature Square

Diari Més Digital

12.01.2020	'Gaudí's Park Güell' consolidates itself among the tourist attractions
------------	--

El País

16.05.2020	Barcelona will open the beaches for walks only
27.05.2020	To the reconquest of Park Güell
10.06.2020	The tourist districts turn to attracting the Barcelona residents
29.06.2020	Park Güell reopens to tourism with lower capacity
14.08.2020	Park Güell receives an average of one thousand tourists a day

Betevé

17.02.2020	Storm Gloria uncovers a water mine in Park Güell
14.02.2020	The Bosc Turull Environmental Classroom expands its territory and biodiversity
21.02.2020	The Tourist Guide Association offers free visits to groups affected by tourism
27.02.2020	The Baldiri Reixac School of Park Güell opens new patios
19.05.2020	Park Güell to reopen on Wednesday without cultural visits
20.05.2020	The local residents of Park Güell fear a wave of visits and request that citizens act responsibly
20.05.2020	Barcelona's 148 parks reopen
30.05.2020	Local residents celebrate being able to walk around Park Güell without crowds
23.06.2020	(Free) summer concerts in Park Güell
29.06.2020	Park Güell will open to the public on 1 July with fewer visitors and timeslots reserved for local residents
02.07.2020	Fewer visitors on the first day of paid entry to Park Güell
02.07.2020	The new regulations of Park Güell deter street sellers
05.08.2020	The Music in the Parks cycle celebrates 25 years with a reduced version
14.08.2020	Park Güell finalises its renovation works
27.08.2020	Classes and recreation outside the school: Barcelona's proposal for the 2020-21 academic year

Trail Park

19.04.2020	VI Park Güell Trail
------------	---------------------

France24

04.06.2020	Barcelona opens its beaches and parks for walks
------------	---

EQUINOX

29.06.2020	Park Güell will be fully open and free for Barcelona residents
------------	--

ACN

16.05.2020	Barcelona will open its beaches walks on Wednesday
------------	--

El Mundo

16.05.2020	A Gaudí without crowds and... empty?
------------	--------------------------------------

Línia Gràcia

27.05.2020	Local residents enjoy Park Güell without tourists
------------	---

ABC

05.06.2020	Gaudí also comes out of lockdown
27.08.2020	Colau offers museums, civic centres and parks to ensure a safe return to the classrooms

LE POINT

23.05.2020	When the tourists are away, local residents recover their towns
------------	---

Impact of Park Güell on the media

Metrópoli Abierta

26.02.2020	Coronavirus, an anti-tourist 'weapon' in el Park Güell
16.04.2020	Colau puts a leisure contract for Park Güell out to tender in the middle of the pandemic
17.05.2020	Gràcia wants priority to walk around Park Güell
06.06.2020	Anti-social behaviour causes surveillance costs to skyrocket in Park Güell
07.09.2020	More than a hundred groups will play at the La Mercè festivities

Ara

18.04.2020	Street musicians sound the alarm about the emergency situation
04.06.2020	Notes from Park Güell without tourists
29.06.2020	Park Güell will reopen on 1 July with a 50% reduction in capacity and timeslots exclusively for local residents
29.06.2020	Park Güell will reopen this Wednesday with a 50% reduction in capacity and timeslots exclusively for local residents
14.08.2020	The renovation works at Barcelona's Park Güell come to an end

EFE

16.05.2020	Barcelona will allow walks along the beach and in parks on Wednesday
------------	--

eldiario.es

16.05.2020	Barcelona will reopen all the parks and allow walks along the beach on Wednesday
21.05.2020	Park Güell reopens without tourists: 'We have not dared go in for the last 15 years'

COPE

18.05.2020	Barcelona residents will be able to walk along the beach and in parks on Wednesday from 6 a.m. to 8 p.m.
12.06.2020	Barcelona will evaluate companies linked to tourism regarding health and hygiene
29.06.2020	Park Güell will reduce its capacity to 50% and will provide exclusive access points to the citizens of Barcelona

El Nacional

20.05.2020	Barcelona's 148 parks reopen after coronavirus
22.06.2020	The sound of the guitar will fill Park Güell every Friday this summer
26.08.2020	Colau offers Park Güell, the Ciutadella park and the Companys Stadium to give classes
07.09.2020	The music of the La Mercè festivities adapts to the pandemic

SWI swissinfo.ch

23.05.2020	When the tourists go, the locals retake the cities
------------	--

El Punt Avui

03.06.2020	Cinema and history at the Barcelona History Museum (MUHBA)
15.06.2020	Recover Park Güell
17.06.2020	Gaudí for Barcelona residents
27.08.2020	Barcelona makes parks and facilities available to schools
07.09.2020	The music of the La Mercè festivities will play during the day and reach new areas like la Modelo, Park Güell and Camp Nou

TV3 a la carta

22.05.2020	Barcelona residents recover Park Güell
11.07.2020	Chicuelo and Marco Mezquida have once again taken to the stage together in Barcelona
14.08.2020	2,000 local residents and 1,000 tourists a day debut the partial restoration of Park Güell

20 Minutos

29.05.2020	Enjoy concerts, monologues, theatre and even a virtual trip to the most wonderful islands this weekend
29.06.2020	Park Güell will reduce its capacity to 50% and will be free for library card holders
07.09.2020	The La Mercè 2020 concerts with bookings in advance and capacity at 30%

Tot Barcelona

01.06.2020	Local visitors to Park Güell enthusiastic at free access without tourists
29.06.2020	Barcelona wants to reduce the number of visitors to Park Güell by 50%
14.08.2020	Park Güell opens an area to visits after works

Nació Digital

29.06.2020	Park Güell reopens with reduced capacity and timeslots exclusively for local residents
07.09.2020	Concerts in the daytime and stages in Camp Nou and Park Güell: the music of the La Mercè festivities 2020

Europa Press

29.06.2020	Park Güell reduces its capacity to 50% and will facilitate access to the citizens of Barcelona.
14.08.2020	Park Güell in Barcelona finalises the renovation of Nature Square and the Hypostyle Room

El Món

05.06.2020	Gaudí also comes out of lockdown
-------------------	----------------------------------

Teleprensa

22.06.2020	MUHBA offers for concerts in Park Güell and a poetry recital in Vil·la Joana
-------------------	--

Cerodosbe

30.06.2020	Park Güell can now be enjoyed without crowds during the visit
-------------------	---

Diari de Barcelona

30.06.2020	A new initiative by Park Güell to support sustainable tourism and local residents
-------------------	---

Spanje Vaandag

30.06.2020	Barcelona reduces the number of visitors to Park Güell by 50%
-------------------	---

La Razón

30.06.2020	Park Güell reduces its capacity to 50% and will facilitate access to the citizens of Barcelona
14.08.2020	Barcelona offers facilities and parks to schools for classes and breaktimes

Impact of Park Güell on the media

Catalan Audiovisual Media Corporation

29.06.2020	Park Güell will guarantee its use by local residents and promote sustainable tourism
30.06.2020	Park Güell once again charges for entry and will reduce the capacity by half
30.06.2020	Guitars will fill four Barcelona nights in Park Güell.

TIMEOUT

29.06.2020	Park Güell recommences activities with lower capacity and more focused on Barcelona residents
23.06.2020	Free guitar concerts this summer in Park Güell
22.07.2020	Music in the Parks 2020

Catalan News

14.08.2020	Parc Güell restoration works on iconic areas completed
07.09.2020	La Mercè: Barcelona's top festival adds Camp Nou and Park Güell as music stages

HOSTELTUR

30.06.2020	Park Güell reopens with a capacity for 1,400 people per hour
-------------------	--

Notícias Clave

01.07.2020	The guitar plays a leading role in a series of summer concerts in Barcelona's Park Güell
-------------------	--

bazarshowmag.com

01.07.2020	The MUHBA guitar concerts in Park Güell begin on Friday, 3 July
-------------------	---

Va de Barcelona

02.07.2020	The MUHBA guitar concerts in Park Güell begin on Friday, 3 July
-------------------	---

La Cultura No Val Res

28.06.2020	Summer concert cycle in Park Güell/Barcelona. From 3 to 24 July (Barcelona)
-------------------	---

Equipamientos y Servicios Municipales

18.08.2020	Part of the renovation works at Barcelona's Park Güell completed
-------------------	--

Aldia.cat

14.08.2020	Park Güell in Barcelona completes the renovation of plaça de la Natura and the Hypostyle Room
-------------------	---

Cadena Ser

26.08.2020	Barcelona makes more than 230 public spaces available to schools
-------------------	--

Social.cat

27.08.2020	Barcelona will make 74 facilities and 159 outdoor areas available to schools and colleges for the next academic year
-------------------	--

Vilaweb

26.08.2020	Barcelona will make 74 facilities and 159 outdoor areas available to schools and colleges for the next academic year
-------------------	--



Park Güell participates in the VI Seminar of the Gaudí Council

The **Gaudí Council** approves the work lines for preparing the new **Strategic Plan 2021-2026**. This process will analyse the origin and activities of the Gaudí Council, review the founding objectives of the Council and also establish strategic working lines that will guide its task towards the materialisation of the approved projects, which adapt to the common and specific needs and objectives of each of its members.

For the last six years, managers of the works of Gaudí have undertaken to work together to preserve and promote his work. During the session, held on 24 February, a review was made of the work carried out so far, and the objectives for 2026 were also established, which will mark the hundred years since his passing.

Park Güell participates in the VI Seminar of the Gaudí Council (web seminar) which this year is being held under the title ‘Cultural heritage in light of the Covid-19 crisis’.

The Covid-19 crisis has had a generalised impact on all areas of our society, of which culture, heritage and tourism have been among those most affected. The cultural assets and facilities have had to close their doors and reorganise their activities within an uncertain scenario. The long-term impact is difficult to predict. This online seminar served to present the indicators and reflect on the challenges of the future: the decrease in international tourism, the reconnection with local visitors, the virtualisation of heritage and the implementation of more sustainable strategies.




CONSELL GAUDÍ

VI SEMINARI

EL PATRIMONI CULTURAL
D'AVANT LA CRISI DE LA COVID-19

14 DE DESEMBRE DE 2020

 Generalitat
de Catalunya

 Ajuntament
de Mataró

 CULTURA
MATARÓ



05

Economic
data



Economic indicators

Plan of actions in Park Güell and the surrounding area		Expenses in 2020
Lot 8. Improvement works: Font Sarva, conditioning of access to the cistern, restoration of outdoor benches, restoration of Viaducte de Baix, reinforcement of balustrades and benches and repair of the Hypostyle Room ceiling	Finished	€664,040.67
Motorisation of gates (DR and DO)	Ongoing	€14,714.36
Culture master plan (MUHBA)	Ongoing	€53,570.12
Local civil officer assistants in La Salut and Tres Creus	Finished	€40,422.52
Improvements to the bus stop	Ongoing	€3,537.20
Organisation of mobility at Park Güell: La Salut district	Ongoing	€152,818.66
Turull Classroom (District of Gràcia)	Ongoing	€76,442.00
Steps along carrer de l'Alguer (District of Horta-Guinardó)	Ongoing	€178,652.00
Baixada de la Glòria escalator	Ongoing	€9,959.00
Drawing up of district projects		
Redevelopment of carrer d'Antequera (District of Horta-Guinardó)	Finished	€5,466.00
Artificial grass at the El Carmel football club (H-G)	Ongoing	€13,484.00
Redevelopment project for the Ramiro de Maeztu plot	Ongoing	€12,585.12
Preparation of public space projects		
Master plan for infrastructures and services	Ongoing	€64,054.11
Pathologies study – Master plan for architectural and natural development	Ongoing	€2,299.00
Technical Secretariat		€100,000.00
Total expenses in 2020		€1,392,044.76





Report coordination
Technical Secretariat for Park Güell

Design and layout
studi-k

2021 edition

Technical Secretariat for Park Güell

Ctra. Carmel, 23
08024 Barcelona

secretaria.parkguell@bcn.cat
www.parkguell.barcelona

parkguell.barcelona